



A Year of Growth and Consolidation.

ITI Annual Report 2005



Contents

4	Introduction
6	ITI President's Report
8	ITI Research Committee
10	ITI Education Committee
12	ITI Development Committee
14	New Fellows
16	Sections
16	Australian Section
16	Brazilian Section
17	Canadian Section
18	Danish Section
18	Dutch Section
18	French Section
19	German Section
20	Iberian Section
20	Italian Section
21	Japanese Section
21	Swedish Section
22	Swiss Section
22	Turkish Section
23	UK & Irish Section
23	US Section
24	Forum Implantologicum
26	ITI Scholarship Committee
28	Celebrating 25 Years of the ITI
30	Financial Report

A Worldwide Network of Experts



The ITI was founded in 1980 by a group of 12 experts as a non-profit organization. Its founding members believed that progress in the field of implant dentistry is best achieved if a multi-disciplinary team of clinicians and researchers collaborate closely to improve products and treatment methods on an ongoing basis.

	31.12.2004	31.12.2005	New
Fellows	364	423	63
Members	287	1,175	888
Total	651	1,598	951

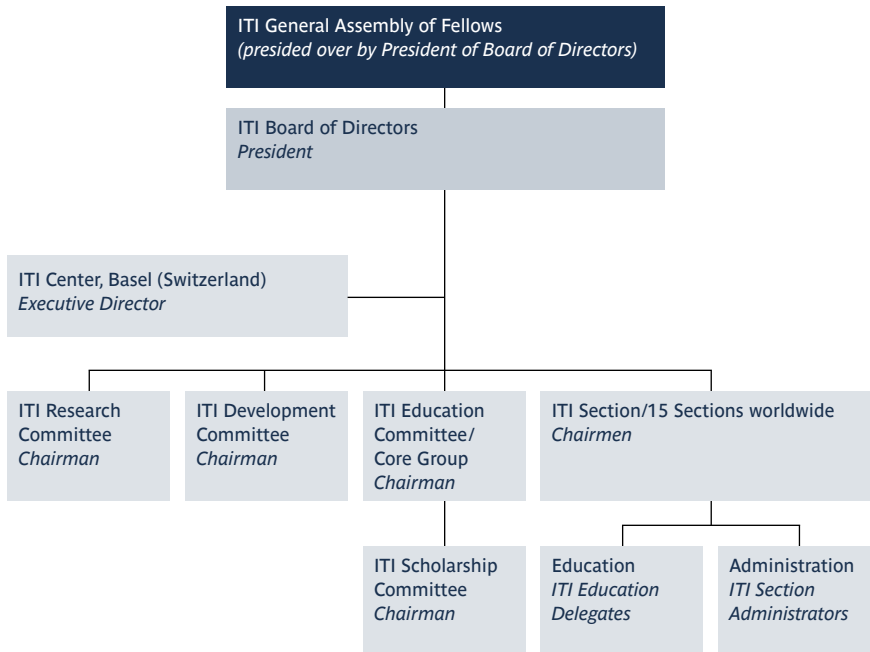
“...to promote and disseminate knowledge on all aspects of implant dentistry and related tissue regeneration through research, development and education to the benefit of the patient.”

These principles form the mission statement of today's ITI – the International Team for Implantology. The ITI is a global network that unites experts and specialists from all fields of implant dentistry and related tissue regeneration. As an independent academic association, it actively promotes networking and exchange among its membership. ITI Fellows and Members regularly share their knowledge and expertise from research and clinical practice at meetings, courses and congresses with the objective of continuously improving treatment methods and outcome to the benefit of their patients.

Focus of activities

The ITI is active in three principal areas: research, development and education. The ITI has set up a committee made up of international opinion leaders for each of these areas. The committees meet several times a year to set goals and agree on how to proceed. The ITI Board of Directors is responsible for strategic decisions and the overall long-term focus of the organization.

Over 25 years the ITI has built a reputation for scientific rigor based on the premise of well-documented treatment guidelines backed by extensive clinical testing and the compilation of long-term results. The ITI's more than 400 Fellows, who form the organization's core, contribute their time, energy and skills and are driven by a strong sense of responsibility and idealism.



ITI Fellows

Fellows represent the ITI's inner core of membership. Entry is by nomination only. An ongoing and high degree of commitment in the fields of leadership, research, development or education is necessary to retain Fellowship status. Fellows may also serve on the ITI's committees or on the Board or take on functions in an ITI Section.

ITI Members

The ITI welcomes all dentists, dental technicians, physicians and scientists with an interest in implant dentistry as Members of the organization. Members benefit from the opportunity to meet like-minded professionals through national and international events and have direct access to information on the latest developments in the field.

A growing organization

From a small local group, the ITI today has grown into an efficient and dynamic network that enables collaborative research and provides high-quality education all over the world. In 2003, the ITI underwent restructuring with the aim of opening up the organization to a broader audience by creating the Member category and establishing national Sections. In 2005, the ITI had 15 Sections and was able to welcome 63 new Fellows and 888 new Members. At the end of the year, the organization had a membership of 1,598 professionals, 423 Fellows and 1,175 Members.

ITI President's Report

A year of growth and consolidation

As a World Symposium year that also marked the 25th year since the foundation of the ITI, 2005 was very eventful for our organization. It was also the year in which I was elected president of the ITI, taking over from Tom Taylor who had guided the organization through a period of change and upheaval. I would like to thank Tom Taylor for his hard work. It is up to us now to systematically implement the measures that he and the Board of Directors put into place. The Board also underwent one change in its membership: Erik Hjørting-Hansen was rotated off the Board of Directors to be replaced by Anthony Dickinson, the first Australian Fellow to serve on the Board. The diversity of nationalities found on our Board of Directors is one of its advantages. In this way we are able to ensure that the interests of each world region, however far away, are always represented in discussion.

My personal relationship to the ITI extends back to 1989, when I was a young scientist and received considerable support from the ITI. Today, in my role as President of the ITI and ex-Chairman of the German Section, I would like to return the favor by dedicating my time and experience to the ITI as a whole, and by supporting the Sections in every way possible so that they continue to grow and spread the ITI philosophy in their respective countries. To this end I started visiting Sections in 2005 and continued to support them by attending national congresses in 2006.

Strong growth within the organization

I would like to extend a welcome to all those Members who joined us in 2005 as well as the Fellows who were nominated in that year. We grew by 888 Members, and 63 colleagues were also nominated and elected Fellows. This increase in the size of our organization and the growth of our Sections also bring with them the challenge of managing them appropriately. It is immensely satisfying to note that 13 of our 15 Sections invested time, effort and enthusiasm into organizing national congresses for 2006. We do not want, however, to lose sight of the benefits to individual Members and Fellows of one-to-one communication that are so important to our group.

Communicating with one another

The ITI World Symposium that took place in Munich also deserves a mention as the highlight of the calendar for the implant dentistry community. It was marked by smooth organization, an exciting range of topics and excellent attendance by clinicians from all over the world. This event was followed in November by the launch of the Forum Implantologicum – our new biannual magazine. This regular magazine represents yet one more way in which we communicate with our Fellows and Members, provide them with a forum for discussion and keep them up to date on developments and interesting topics in implant dentistry.



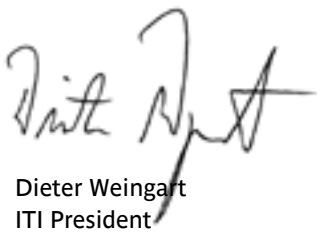
Professor Dr. Dr. Dieter Weingart, former Chairman of the German Section, has been an ITI Fellow since 1989. He was nominated ITI President-elect in 2003. In 2005, he was elected President of the ITI. His term of office continues until 2009.

First issue of ITI Annual Report

This is the first year that we have provided an annual report in print form. There are a number of reasons behind this decision – not least that we are now addressing a much larger audience. 25 years ago, personal contact and exchange were considerably easier, given the numbers involved. So we would like to ensure that everyone within the organization has the opportunity to read the reports made by each of our Committees and Sections. And we would also like to provide other members of the professional community and organizations with a publication that summarizes our goals and the achievements for each year. This first issue of the ITI Annual Report was made possible thanks to the support of and contributions from the Sections and Committees.

This is also the place to thank the ITI Center for its hard work in making the above events and publications possible. It plays an important role in the smooth running and administration of our organization. The ITI Center staff is there to help you and welcomes each query, question and visit from Fellows and Members.

Energy and a sense of commitment were instrumental in making 2005 a great year for the ITI. Fellows gathered together to work on creating or extending their Section’s educational program, plan national congresses, and attract new Members. We can be proud of the progress we have made.



Dieter Weingart
ITI President

Board of Directors
<i>President:</i>
Weingart Dieter, Germany
<i>Past President:</i>
Taylor Thomas D., USA
Bullón Pedro, Spain
Buser Daniel, Switzerland
Cochran David L., USA
Dickinson Anthony, Australia
Seto Kanichi, Japan
ten Bruggenkate Christiaan, Netherlands
Achermann Gilbert, Switzerland
Straumann Thomas, Switzerland

ITI Research Committee

David L. Cochran
Chairman of the ITI Research Committee

ITI Research Committee Members

Chairman:

Cochran David L., USA

Belser Urs, Switzerland

Hunziker Ernst B., Switzerland

Lang Niklaus P, Switzerland

Lindhe Jan, Sweden

Neukam Friedrich, Germany

Seto Kanichi, Japan

Taylor Thomas D., USA

Wagner Wilfried, Germany

Simpson James P, Switzerland

With 59 applications for grants in 2005 – 20 more than in 2004, the Research Committee was kept very busy processing applications and deciding which best fitted the Committee's criteria for funding. At the end of the decision-making process, 21 projects were awarded grants, giving a total of close to USD 2 million of research funds allocated in 2005.

Deciding on how to allocate funding each year is the principal task of the Research Committee. In 2005 there was much discussion on whether to define the field of interest for projects more precisely, but the Committee decided to maintain as broad a field as possible. Research projects are required to fall into the categories of implant dentistry, tissue regeneration or their related fields. The thinking behind this decision is to encourage and enable as many young scientists as possible to apply for a grant and contribute to the fund of knowledge at the profession's disposition. There are no hard and fast rules about which projects have a higher chance of acceptance, but projects that address a broad target audience in a field that is currently under close scrutiny are well positioned for acceptance.

The projects accepted fall within an eight-category classification (see pie chart) with the best supported category currently: Implant/tissue interface. Grants are allocated to researchers and clinicians all over the world. There are a number of different grant categories, from small grant applications of under USD 40,000 and clinical or laboratory research grants which can go up to USD 162,000.

2005 Research applications and grants

Applications received	59
Applications accepted	21
Total grants*	1.927
Total grants for	0.516
ITI Members/Fellows*	
Total grants for	
non-ITI Members/Fellows*	1.411

* in USD million



Broad expertise

A clear strength enjoyed by the Committee is the broad range of expertise represented by the Committee’s members. It includes, among others, prosthetics, periodontology, oral surgery and materials science. This expertise is invaluable in the evaluation of applications. Each project is assigned an expert who writes up a summary of the project, but every application also goes through the hands of every Committee member who evaluates it according to four criteria: relevance, methodology, experience and budget.

Neutral funding

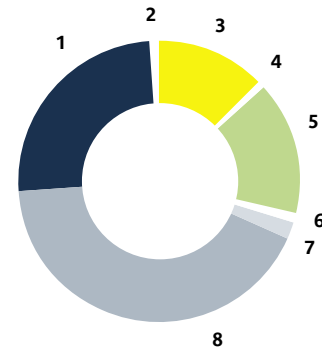
Since 1988, the ITI has funded research projects to a total of close to USD 20 million. Quality of research has always been one of the most influential factors when deciding on a project rather than its potential commercial application. Similarly, the Research Committee evaluates projects on their merits and does not take into consideration whether the applicant is affiliated to the ITI or not. In 2005, of the 21 grants that were allocated, only five went to ITI members; the remaining 16 grantholders had no affiliation to our organization.

By supporting these projects, the ITI is ensuring that solid scientific research remains the foundation of any products or treatment methods that it recommends. Its ongoing and generous contribution to research in implant dentistry, tissue regeneration and its related fields makes the ITI the largest non-governmental funding organization worldwide.

Distribution of grants per country (1988 – 2005)
(in USD)

Switzerland	6,453,535
USA	4,539,703
Germany	2,880,540
Denmark	1,057,720
Sweden	955,977
UK	807,179
Italy	431,672
Austria	374,182
Australia	355,045
Canada	340,980
Belgium	191,265
New Zealand	175,962
Netherlands	129,186
Finland	92,715
Romania	89,238
Turkey	84,563
Japan	45,358
France	18,911
Brazil	2,185

2005 distribution of grants per classification



1 Prosthetics including occlusion, esthetics	26%
2 Predictability of implant restorations	0%
3 Systemic influence and osseointegration	13%
4 Implant therapy treatment planning	0%
5 Bone augmentation, metabolism and implants	16%
6 Implant orthodontics	0%
7 Risk factors for dental implants	1%
8 Implant/tissue interface	44%



To find out more about how the ITI supports research or to apply for a research grant go to www.iti.org.

To find out more about how the ITI supports research or to apply for a research grant go to www.iti.org



ITI Education Committee

Daniel Buser
Chairman of the ITI Education Committee



Education Core Group and Committee
The Education Core Group is responsible for strategic and conceptual projects, while the Education Committee implements the guidelines set by the Core Group at a national level.



ITI Treatment Guide
The Treatment Guide series, based on the findings of the ITI Consensus Conferences, is intended to become a standard educational tool with step-by-step guidelines for use in daily practice. Each volume discusses a clinical topic within a defined set of indications and provides a comprehensive overview of various options from the entire treatment spectrum.

2005 was a very busy and productive year for the ITI Education Core Group and the ITI Education Committee, both of which work to ensure the highest possible standards of further education and enable access to ITI treatment methods to a broader public. With the increased acceptance of implant therapy by patients and clinicians, quality assurance and appropriate education have become key to the future of the field.

Global education strategies

The ITI Education Core Group held three meetings in 2005 and made substantial progress with several ongoing projects. The Group welcomed Dr. Stephen Chen, who was unanimously appointed to the Education Core Group at the November ITI Board Meeting to replace Professor Dieter Weingart, who had been elected ITI President in June.

Local implementation of guidelines

The ITI Education Committee met once in 2005 to discuss initiatives including national congresses and courses as well as the ITI educational curriculum and its implementation in the Sections. The national ITI Congresses represent a key element of the ITI Education strategy. 13 of the 15 ITI Sections planned a national Congress for 2006, and the 1st ITI Asia Congress in Shanghai is scheduled for December – a true “ITI World Tour”. Numerous ITI education and training courses, speaker development events, and study clubs all over the world complement these congresses.

Launch of ITI Treatment Guide

Under the guidance of the Education Core Group, a number of distinguished clinicians are working on a richly illustrated series of books known collectively as the ITI Treatment Guide. After intensive work in 2005, the first volume entitled “Implant Therapy in the Esthetic Zone – Single Tooth Replacements” will be published in October 2006 in cooperation with Quintessence Publishing Group. The Education Core Group has also decided on the topics for a further four volumes and assigned authors to them. The ITI plans to publish one volume every six months.

ITI Faculty

The success of the ITI's educational activities is due in large part to the many ITI Fellows and Members who in their role as ITI Speakers actively participate in making implant dentistry and ITI treatment methods available and accessible to a broader group of users. The extensive pool of international speakers is one of the ITI's greatest strengths in terms of continuing education. In 2005, the ITI Education Core Group formalized a process to appoint and manage a list of approved ITI Speakers to which all ITI Sections have access via the ITI's internet-based software platform, the ITI Knowledge Network.

SAC Curriculum Development project

The SAC Curriculum Development project is another unique ITI educational tool that was launched in 2005. Under the leadership of James Ruskin, 38 Fellows and Members from the US ITI Section created a modular library of scientific information and material based on the SAC classification. Each module includes learning objectives, references and additional educational materials such as images and graphics. The Curriculum Library is available on the Knowledge Network and can currently be accessed by all ITI Speakers, Education Delegates and Section Administrators.

This first release represents the initial building block of a much more comprehensive educational resource; the Curriculum library is a "living document" that is being constantly extended.

ITI World Symposium 2005

One of the highlights in the field of implant dentistry in 2005 was the ITI World Symposium in Munich, Germany between June 18 and 20. Under the banner of "25 years of ITI – changing the paradigms in implant dentistry", 106 lecturers held a total of 72 presentations on the latest research findings from the clinic and laboratory. More than 2,600 attendees from 63 countries came to Munich to find out about new directions in implant dentistry and made this event the largest and most successful ITI event to date.

SAC Classification

(Developed by the Swiss Society for Oral Implantology)

S= Simple/Basic

A= Advanced

C= Complex

ITI Education Core Group Members

Chairman:

Buser Daniel, Switzerland

Botticelli Daniele, Italy

Chen Stephen T., Australia

Katsuyama Hideaki, Japan

Ruskin James D., USA

Wismeijer Daniel, Netherlands

Bürgi Marianne, Switzerland

ITI Education Committee Members

Chairman:

Buser Daniel, Switzerland

Alcoforado Gil, Portugal

Chen Stephen T., Australia

Cordaro Luca, Italy

Fabrèga Javier, Spain

Hämmerle Christoph, Switzerland

Head Timothy, Canada

Iplikcioglu Haldun, Turkey

Katsuyama Hideaki, Japan

Lima Luiz A.P., Brazil

Johansson Lars Ake, Sweden

Donos Nikolaos, United Kingdom

Rousseau Paul, France

Ruskin James D., USA

Storgård Jensen Simon, Denmark

Terheyden Hendrik, Germany

Wismeijer Daniel, Netherlands

ITI Development Committee

Christiaan ten Bruggenkate
Chairman of the ITI Development Committee



Partnership with Straumann

Straumann is the industrial partner of the ITI. The core competence of the ITI is medical and clinical expertise, while Straumann develops, produces and sells the products of the Straumann Dental Implant System. The ITI benefits from financial support offered by Straumann, which is used to finance the ITI's research, development and educational projects. Our common goal is to offer patients the best possible, scientifically based treatment solutions with dental implants and a high standard of quality for products, treatment methods, courses, and congresses.

The ITI and Straumann have enjoyed a long relationship that extends back to the foundation of the ITI 25 years ago. While the ITI's focus is on scientific and clinical knowledge, Straumann provides commercial and technical know-how.

The ITI's founding members believed that progress in the field of implant dentistry is best achieved if a multi-disciplinary team of clinicians and researchers collaborate closely, not only to improve treatment methods, but also to provide the impetus to product-development work. By giving recommendations based on findings and ideas from research and clinical practice for new and further development of existing products, the ITI Development Committee is instrumental to the symbiotic cooperation with the ITI's industrial partner Straumann. This relationship has proved to be very beneficial to both parties over the years, without affecting their respective independence.

Input and recommendations from clinical practice

Consisting of 9 members – the chairman, six clinicians, one dental technician and one Straumann representative - the Development Committee meets regularly to participate actively in product development projects, define areas of interest for new projects and recommend locations where clinical trials can be carried out. The Development Committee's objectives are to maintain the integrity of the implant system while keeping it globally uniform and up-to-date according to the latest professional and scientific standards. The main focus here is to ensure and improve on the best treatment methods used with dental implants as well as to guarantee predictability of clinical interventions and documentation of long-term results.



2005 meetings

The Development Committee held three meetings in 2005. At the first meeting in February Markus Koller was replaced by Sandro Matter as the new Straumann representative. The Development Committee meetings in 2005 also included workshops on esthetics in implant dentistry and the future of the Straumann Implant System, in which the Development Committee discussed the way they see the product line from a scientific standpoint. Apart from these meetings there is also regular “ad hoc” exchange between the members of the Development Committee and Straumann representatives.

ITI Knowledge Network

In order to ensure secure communications, the activities of the Development Committee are facilitated via the ITI Knowledge Network, the ITI’s web-based software platform. In 2005, this communication tool was further fine-tuned in terms of user friendliness.

ITI Development Committee Members

Chairman:

ten Bruggenkate Christiaan,
Netherlands

Belser Urs, Switzerland

Brägger Urs, Switzerland

Flury Kurt, Switzerland

Higginbottom Frank, USA

Röckl Johannes, Germany

Shafer David, USA

Wahl Gerhard, Germany

Matter Sandro, Switzerland



Kivanç Akça, Sıhhiye, Ankara, Turkey / Claudio Arcuri, Rome, Italy / Klaus-Ulrich Benner, Munich, Germany / Göran Bergkvist, Norrköping, Sweden / Fernandez Bodereau, Cordoba, Argentina / Farhad Boltchi, Arlington, TX, USA / Michael Bornstein, Berne, Switzerland / Nina Broggin, Berne, Switzerland / Bobby Butler, Seattle, WA, USA / Colin Campbell, Nottingham, UK / Kyoo-Sung Cho, Seoul, Korea / Marcelo Luis Conci, Florida, Argentina / Gregory Conte, San Francisco, CA, USA / Anthony Dawson, Deakin Act, Australia / Chris de Chavonnes Vrugt, Windhoek, Namibia / Alessandro Devigus, Bülach,

New Fellows

During their three meetings this year, the ITI Board of Directors elected 63 new Fellows who fulfill the organization's criteria for a strong commitment to and high level of activity in the areas of leadership, research, education or development. We would like to welcome the new Fellows to the ITI and wish them all the best in terms of professional fulfillment and valuable new friendships in the ITI community.

Switzerland / Thomas Ding, Dallas, TX, USA / Fritz Düker, Offenburg, Germany / Michael Ehrenfeld, Munich, Germany / Bassam El Dokr, Abu Dhabi, United Arab Emirates / Jan Stefan Ellner, Kalmar, Sweden / Jan Fornell, Löderup, Sweden /

Arne Geir Grønningaeter, Bergen, Norway / Nils-Claudius Gellrich, Hannover, Germany / Jason Gillespie, San Antonio, TX, USA / Larry Grillo, Aventura, FL, USA / Werner Häfliger, Geneva, Switzerland / Mats Hallman, Gävle, Sweden / Anne-Marie Halmoe, Bergen, Norway / Christopher Hart, Berne, Switzerland / Brody Hildebrand, Dallas, TX, USA / Maria Kandylaki, Berne, Switzerland / Donald Katz, Philadelphia, PA, USA / Christian Krenkel, Salzburg, Austria / Joachim Kreusser, Aschaffenburg, Germany / Akshay Kumar, Hackensack, NJ, USA / Hong Chang Lai, Shanghai, China / Jong-Ho Lee, Seoul, Korea / Tomas Lindh, Umea, Sweden / Eduardo Lorenzana, San Antonio, TX, USA / John Lucas, Ashburton, Australia / Michael Matejka, Vienna, Austria / Mark Miller, Tustin, CA, USA / Frauke Müller, Geneva, Switzerland / Ken Nixon, Paddington, Australia / Giacomo Oteri, Messina, Italy / Frank Palm, Konstanz, Germany / Michael Rasse, Innsbruck, Austria / Torsten Reichert, Regensburg, Germany / Carl Schulter, Memphis, TN, USA / Dieter Schumann, Jena, Germany / Atilla Sertgöz, Istanbul, Turkey / Oender Solakuglu, Hamburg, Germany / John Stringfellow, Brisbane, Australia / Goran Stroh, Boras, Sweden / Richard Stuart, Indianapolis, IN, USA / Louwrens Swart, Cape Town, South Africa / Ken Tan, Singapore, Singapore / Martha Maria Theodorou, Florida, Argentina / Michael Thunfors, Göteborg, Sweden / Sophocles Voyiazis, Nicosia, Cyprus / Pieter Wolfaart, Cape Town, South Africa / Yuelian Liu, Berne, Switzerland

Sections

Australian Section

Anthony Dickinson



The highlight of the Australian Section calendar in 2005 was the Section's second Annual Meeting, which was scheduled to coincide with the opening of the new Straumann Australia headquarters in July. The meeting attracted 95 Fellows and Members, who were presented with a report of the proceedings of the 2005 ITI Annual General Meeting in Munich. The Section meeting was followed by a very successful scientific meeting. The Section also took the opportunity to organize a Fellow's meeting and Speaker support event on the preceding day; the latter was attended by 25 participants.

Stephen T. Chen



The Australian Section was very well represented at the World Symposium in Munich and two of its Fellows were invited as Speakers: Drs. Stephen Chen and Chris Evans – the latter receiving the award for best research presentation in prosthetics. The Section Chairman Dr. Anthony Dickinson co-chaired the closing session; 'Esthetics in Implant Dentistry'. The Section also congratulated its Chair on being elected to the Board of Directors by the Fellows at the ITI Annual Meeting that preceded the World Symposium.

Angela Young



Among the goals achieved by the Australian Section was the consolidation of its various educational activities and the development of new courses based on the SAC concept. Additionally, the Section continued to raise awareness of the ITI and its activities, encourage new membership and provide ongoing value to those who were already a part of this global family.

While the ITI has a relatively long history of activity in Australia, particularly in the field of education and training, the Section was granted official status only in 2003. The Section's broad program of activities is reflected in the continued growing interest in the ITI in Australia and the rapid increase in membership, with 13 Fellows and 97 Members by the end of 2005.

Section Officers:

Chairman: Anthony Dickinson
Education Delegate: Stephen T. Chen
Section Administrator: Angela Young

Brazilian Section

2005 was the first full year of activities for the Brazil Section. Having established itself with 12 Fellows in 2004, the Section aimed to strengthen the ties between Fellows during the following year and also to promote the ITI philosophy throughout the country.

It approached this undertaking by organizing and promoting continuing education activities. During the two Section meetings in 2005 a very ambitious plan was developed to integrate the SAC curriculum into all the ITI courses run by the Section and, accordingly, all the ITI courses now run in Brazil share a unified approach based on a clearly defined target audience, educational goal and well defined scope. The Section also initiated planning to translate the latest ITI

Consensus paper into Portuguese and write a book on various aspects of implant dentistry with each chapter authored by a different Fellow.

The establishment of an ITI Section in Brazil has provided a platform from which ITI Fellows can network with each other across this very large country and work on attracting new Members to the organization. With 200,000 dentists in Brazil and a very polarized society in terms of personal wealth, the ITI has an important role to play in ensuring that the very large financially disadvantaged section of the population also has access to treatment methods that are reliable over the long term. During 2005, more than 600 low-income patients were treated as part of the 28 ITI courses held in Brazil in cooperation with Straumann.

Planning for the 2006 ITI Brazil congress constituted a major part of the work carried out in 2005, but the Section was also proud to send two of its Fellows – Dr. Pedro Tortamano and Dr. Maurício G. Araújo – as Speakers to the 2005 ITI World Symposium in Munich. In total, more than 50 Brazilian dentists attended this event. At the end of 2005 the Brazil Section had grown to 12 Fellows and 64 Members.

Section Officers:

Chairman: Pedro Tortamano
Education Delegate: Luiz Lima
Section Administrator: Hans-Andreas Aebi



Pedro Tortamano



Luiz Lima



Hans-Andreas Aebi

Canadian Section

In the unique context of Canada's cultural diversity, the Canadian ITI Section has always tried to reflect the country's linguistic and geographic variety in its Fellows. In 2005 the Section held a number of Section meetings at various locations across the country's seven thousand-mile breadth with the objective of promoting the advancement of implant dentistry in conjunction with the principles and philosophy of the ITI. In addition to the regular Section meetings over the recent years, two meetings were held in conjunction with the colleagues from the US ITI Section. The majority of the Section's 11 Fellows attended the 2005 ITI World Symposium.

Later on in the year, within the scope of its very ambitious Speaker Development Program, the Section also held a Speaker support event attended by 10 Fellows and 5 Members. The Section continued to grow and expand during 2005 with a total of 13 Fellows and 44 Members at the end of 2005. For the future it plans to further stimulate growth of an autonomous Canadian Section through intensified educational activities.

Section Officers:

Chairman: George K. B. Sándor
Education Delegate: Timothy W. Head
Section Administrator: Gary Jones



George K. B. Sándor



Timothy W. Head



Gary Jones

Danish Section

Henning Lehmann
Bastian



Simon Storgård
Jensen



Finn Andersen



The Danish Section, established in 2003, decided on a number of relatively modest objectives for 2005. It held three meetings during 2005 at various locations throughout Denmark with the principal goal of preparing for the Section's national ITI Congress in Copenhagen on December 1, 2006. The Section is currently without a Section Chairman although Professor Erik Hjørting-Hansen has taken over *ad interim*. The Danish Fellows and Members all hope that Dr. Henning Lehmann Bastian will be able to resume the Chairmanship soon. The Section, nevertheless, showed steady growth with a total of 6 Fellows and 19 Members at the end of December 2005 and an increased exchange of ideas between Fellows and Members is becoming apparent.

Section Officers:

Chairman: Henning Lehmann Bastian
Education Delegate: Simon Storgård Jensen
Section Administrator: Finn Andersen

Dutch Section

Jacques Ignas
Vermeeren



Daniel Wismeijer



Wim van Dam



In 2005, the Dutch Section concentrated on building up Section membership and focused on organizing its first Section meeting in the Straumann course center in IJsselstein – the meeting attracted 37 attendees. Additionally, the Dutch ITI Fellows met twice in Spring and late Autumn to discuss Section business matters. As well as educational activities, networking opportunities within the ITI Section were also frequent throughout the year.

A number of special theme evenings were also well attended, the first, in March, on implantation in the esthetic zone and the second on bone augmentation held in June. Four of the Section's Fellows also took part in the ITI World Symposium in Munich as part of the Symposium faculty. At the end of 2005 the Section had 6 Fellows and grew from just 4 to a total of 45 Members.

Section Officers:

Chairman: Jacques Ignas Vermeeren
Education Delegate: Daniel Wismeijer
Section Administrator: Wim van Dam

French Section

In 2005 the French Section focused on developing an exciting educational program. The group met four times in Paris to develop strategies and work out details.

At the second Section meeting in March, a group of communications specialists gave a training course on presentation skills to the attending French Fellows and Speakers.

The course was complemented by a social program which allowed the participants to network and exchange ideas. A second speaker support event was held in October in Biarritz and was attended by 22 participants.

Among the Section's longer-term goals was the organization of a national master course aimed at all Fellows and Speakers that was scheduled to take place six times a year over two days. The course is now successfully up and running. The Section's other main activity in 2005 was the organization of the French ITI Congress in Versailles for June 2006. Further meetings were also planned with the goal of getting Speakers and Fellows to know each other better and therefore increase the degree of communication and exchange between them. They achieved this by setting up a number of regular meetings: an implant dentistry study group and a group that focuses on communications and includes topics like photography and computers.

By the end of the year the French Section had expanded to a total of 9 Fellows and 56 Members.

Section Officers:

Chairman: Maurice Leize
Education Delegate: Paul Rousseau
Section Administrator: Hubert Wintzenrieth



Paul Rousseau



Hubert Wintzenrieth

German Section

As the host country for the 2005 ITI World Symposium, the German Section was closely involved in the development of the scientific program and many of the Section's Fellows were invited to be part of the Symposium's faculty. Later on in the year, the Section also met twice in order to plan for its 6th national congress taking place in Cologne in 2006.

During 2005 the Section also introduced an ITI Membership program for Germany and created a welcome package for new Members. The latter included the ITI image brochure that the Section had translated into German for its membership. As well as the image brochure, the Section also translated the latest ITI Consensus paper into German in order to provide a broader public with access to this valuable document. The German-version image brochure and Consensus papers were distributed broadly to interested dental practitioners throughout Germany.

The Section met once for the annual Section meeting in February, which brought together 44 Fellows and Members. At that meeting, Professor Gerhard Wahl was elected Section Chairman to replace Professor Dieter Weingart, who was appointed ITI President in June. The Section also met for a Speaker support event as well as for an Education meeting. By the end of 2005, the German Section had 76 Fellows and 64 Members.

Section Officers:

Chairman: Gerhard Wahl
Education Delegate: Hendrik Terheyden
Section Administrator: Andreas Nitschke



Gerhard Wahl



Hendrik Terheyden



Andreas Nitschke

Iberian Section

Pedro Bullón



The Iberian Section was established in 1997 and is one of the oldest ITI Sections with a long history of activities that include 11 Master Courses, 5 ITI Iberia Congresses, many “teaching for teachers” events and other educational courses.

Javier Fábrega



One of the Section’s goals in 2005 was to establish a network of communications channels via the internet between Fellows and Members, as well as to set up web discussion forums for use by the membership in questions of clinical diagnosis. In addition, the Section also planned to carry out a broader range of activities than previously. Both goals were achieved.

Gil Alcoforado



In 2005, the Section held two Section meetings; at the first held in July, Professor Pedro Bullón was unanimously elected Section Chairman. The Section also organized a two-day “teaching for teachers” event as well as a course on immediate loading, both of which were well attended with more than 60 and 200 participants, respectively. Three Iberian Fellows – Professor Gil Alcoforado, Dr. Javier Fábrega and Dr. Frederico Herrero - participated in the ITI World Symposium as Speakers. The Section also devoted time to the preparation of all the 2006 ITI Activities (in Barcelona, Lisbon, Cadiz and Madrid).

Acis Monteiro



Membership of the Iberian Section has grown progressively over the years and at the end of 2005, it had 25 Fellows and 51 Members, 40 more Members than in the previous year.

Section Officers:

Chairman: Pedro Bullón
Education Delegate: Javier Fábrega (Spain)
Education Delegate: Gil Alcoforado (Portugal)
Section Administrator: Acis Monteiro

Italian Section

Mario Rocuzzo



With a principal goal of improving educational activities, the Italian Section invested much time in organizing educational courses and workshops for 2006. These included a seminar, a national ITI Congress and SAC courses throughout Italy. A great deal of effort went into increasing awareness of the ITI as an organization throughout the scientific community. A part of the Straumann Italy customer publication – Bionews – is now dedicated to ITI issues and news.

Luca Cordaro



In addition to two Section meetings in March and September, the Section also held a two-day Speaker development course in Sardinia in September attended by 45 Fellows and Speakers. This event was very successful both from the professional and social standpoint. It served to cement the ties between those attending and strengthen the Italian ITI network as a whole.

Simo Beraha



The Italian Section registered 71 new Members in 2005 and by the end of 2005 had 24 Fellows and 75 Members in total.

Section Officers:

Chairman: Mario Rocuzzo
Education Delegate: Luca Cordaro
Section Administrator: Simo Beraha

Japanese Section

The ITI Section Japan has a long tradition of organizing large-scale symposia and congresses with more than 2,000 participants. 2005 was a very active year for the Japanese Section with ITI Consensus Seminars – based on the ITI Consensus paper published in 2004 – held in five cities and attended by a total of 800 participants nationwide. Japanese Fellows also invested a great deal of time and effort in translating the Consensus paper into Japanese and the translation appeared just nine months after the original English version was published. Additionally, the Section started preparing and promoting the Japanese ITI Symposium 2006 that will be held in July 2006.

Japan was also active at the ITI World Symposium with a number of Speakers as well as session chairmen. Around 100 participants attended from Japan. The Section's main meeting was held in Tokyo in January together with a Speaker support event. Within the Section, the leadership of the Section passed from Dr. Yoshikazu Soejima to Dr. Eiji Funakoshi, and Dr. Takayuki Takeda was elected new Vice-Chairman.

The Japanese Section is very focused on educational activities and spent considerable time developing a new educational concept based on the SAC curriculum. At the same time there has been a strong drive to acquire new Members and to clarify the role and activities of the ITI for the scientific community in Japan. By December 2005, the Section had 17 Fellows and grew from 49 to 78 Members.

Section Officers:

Chairman: Eiji Funakoshi
Vice-Chairman: Takayuki Takeda
Education Delegate: Hideaki Katsuyama
Section Administrator: Isao Nakajima



Eiji Funakoshi



Takayuki Takeda



Hideaki Katsuyama



Isao Nakajima

Swedish Section

Relatively recently established, the Swedish Section is concentrating on building up its Membership. In 2005 the Section met three times and stayed in contact through telephone conferences. Two of the Section's Fellows – Göran Bergqvist and Kerstin Fischer – participated as Speakers in the 2005 ITI World Symposium and in October the Section held an ITI Seminar in Göteborg that was attended by more than 70 clinicians. Much work also went into the preparation for the Section's national congress "Fest ITI val 2006" that was held in April of the following year.

By the end of 2005, the Section's membership stood at 14 Fellows and 7 Members.

Section Officers:

Chairman: Kerstin Fischer
Education Delegate: Lars Ake Johansson
Section Administrator: Ulf Wahlström



Kerstin Fischer



Lars Ake Johansson



Ulf Wahlström

Swiss Section

Urs Belser



While the Swiss Section met once during 2005, the Section's 20 regional Study Clubs had a total of 48 meetings throughout the year. Each club meets up to four times a year with an average of 15 participants per meeting. Before 2005 the Study Clubs had been known as User Clubs, and during 2005 the renamed Study Clubs were integrated into Section activities. This reorganization provided a budget for the clubs, which enabled them to invite external speakers and is an excellent way of attracting new ITI Members.

Christoph Hämmerle



As well as the above meetings, the Section also held a Speaker development course in Berne in February and many of the Section's Fellows were invited as Speakers to the ITI World Symposium in June. The Section's educational program included 38 national and 7 international continuing education courses during the year that were held in German, French, Italian and English.

Heinz P. Frei



At the end of 2005, the Section had 7 new Fellows and an impressive 183 new Members to make a total of 67 and 194 respectively.

Section Officers:

Section Chairman: Urs Belser
Education Delegate: Christoph Hämmerle
Section Administrator: Heinz P. Frei

Turkish Section

Ates Parlar



Although the ITI has been active in Turkey with Study Groups since 1992, the Turkish Section was officially formed in November 2004. During the time when the ITI worked as a Study Group, its Turkish Fellows organized many courses on basic implant dentistry. University lecturers were invited from various universities in order to provide dental professionals with solid information and also to interest these lecturers in the ITI and its philosophy of practice.

Haldun Iplikcioglu



In the last three years, three Turkish dentists have received an ITI Scholarship for a year in Vienna, Chapel Hill and Berne respectively and the knowledge they have brought back is, and will continue to be, of great value to the Section.

Daniel Meyer



In 2005, the Turkish Section met three times. It was a year in which the infrastructure of the Section was defined and created, that Section officers were elected and that planning began for the 2006 ITI Turkish Congress that was held in May as well as courses throughout Turkey. The focus was on attracting new Members and at the end of the year the Section had 8 Fellows and 12 Members.

Section Officers:

Chairman: Ates Parlar
Education Delegate: Haldun Iplikcioglu
Section Administrator: Daniel Meyer

UK & Irish Section

2005 was a very active year for the UK & Irish Section with a strong emphasis on educational activities and planning. At its annual Section meeting in June, the Section appointed Dr. Stephen Barter as Chairman and Professor Nikolaos Donos as the new Education Delegate. The Section Officers led the work on a long-term strategy for course development and its implementation. This involved the creation of education templates as well as welcome packages that provide guidelines for both existing and new Speakers. Mentoring also came up for discussion and an ITI committee was created to develop the necessary education strategy for this issue.

The Section's objective is to put policies in place that will ensure an ongoing high level of quality in education and also allow new Members to participate actively in the delivery of education. Among others, discussions began between a high caliber postgraduate institute of education in implant dentistry in London and the ITI about the possibility of a one-year continuing education course in advanced implant dentistry.

Throughout the year, the UK & Irish Section organized 17 Study Clubs and a variety of educational courses across the country. All these events were very well attended.

Much work also went into the organization of the ITI UK congress that will take place in November 2006. Membership of the Section grew to 12 Fellows and 41 Members by the end of 2005.

Section Officers:

Chairman: Stephen Barter
Education Delegate: Nikolaos Donos
Section Administrator: Ian Braby



Stephen Barter



Nikolaos Donos



Ian Braby

US Section

The US ITI Section is well established but nevertheless devoted much time in 2005 to raising awareness of the ITI in the United States and acquiring new Members and Fellows in order to further spread knowledge of implant dentistry throughout the country.

One of the Section's principal activities was the development of the SAC Curriculum project – a platform to provide educational information in line with the ITI philosophy – and its implementation within the ITI Knowledge Network for use by all ITI Speakers globally.

In 2005 the US Section met for two Section meetings, a Curriculum project meeting and for two Faculty Development courses, attended by more than 30 clinicians from all over the US. In addition, 13 of the Section's Fellows were invited to speak at the 2005 ITI World Symposium in Munich.

By the end of 2005, the US Section had expanded to 70 Fellows and 99 Members, an increase of 13 and 62, respectively.

Section Officers:

Chairman: Thomas G. Wilson
Education Delegate: James D. Ruskin
Section Administrator: Russell Olsen



Thomas G. Wilson



James D. Ruskin

Forum Implantologicum

A New Journal for ITI Fellows and Members

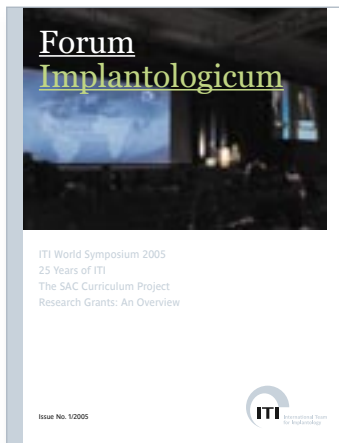
Erik Hjørtning-Hansen
Editor-in-Chief

2005 saw the launch of the new ITI journal Forum Implantologicum. The first issue was published in November 2005 and was received very positively by the ITI community.

Over the last 25 years the ITI has grown from a small group of 12 founding members to a strong independent association which unites professionals around the world from all fields of implant dentistry and related tissue regeneration. In August 2003, the ITI made considerable and necessary changes to its articles such as the creation of a Member category and the establishment of National Sections to further enhance its steady growth. These measures opened up the association to everyone who is seriously interested in the field of implant dentistry.

As with every global organization, continuous growth involves challenging aspects for the ITI. Where until recently the members of the ITI all knew each other personally and mainly communicated face to face, the increase in membership figures made it necessary to create appropriate tools to promote communication within the association as well as to present a recognizable face to the world.

One of these measures is the new ITI journal "Forum Implantologicum" which was launched in November 2005 and is exclusively available to ITI Fellows and Members. The publication's name is a reference to the public square in ancient Roman cities, modeled on the famous Forum Romanum, where people met and discussed matters of current interest. Similarly, the main purpose behind producing this completely new magazine is to provide the entire ITI membership all over the world with a platform for the broad exchange and active discussion of information, opinions and knowledge.



Forum Implantologicum
Issue No. 1/2005

Under the guidance of an experienced Editorial Board, the ITI Center currently publishes two issues of the Forum Implantologicum per year. As well as regular updates on ITI activities, events and projects, Forum Implantologicum also offers solid scientific content in the form of illustrated feature articles. Corresponding Editors from each ITI Section regularly report on national news and activities, ensuring the communication flow within our growing global community. Experts from all fields of implant dentistry provide feature articles and case studies that reflect the interests of the ITI in terms of research, development and education. Scholars give an account of their experiences within the ITI Scholarship program.

The first issue focused on the 2005 ITI World Symposium with both a general overview of the event as well as highlights from individual sessions. Further articles included a progress report on the SAC curriculum project, a review of research grants and their allocation over the previous four years as well as a case study dealing with inter-implant papilla reconstruction, among others.

We all are convinced that Forum Implantologicum will become a valuable communications platform for our organization that brings its membership closer to one another regardless of geographical location and helps to spread the ITI philosophy even further. We hope for a lively exchange of information and knowledge through this new platform and for active participation on the part of Fellows and Members.

Editorial Board

Editor-in-Chief

Hjørting-Hansen Erik, Denmark

Lang Niklaus P, Switzerland

Ruskin James D., USA

ITI Scholarship Committee

Erik Hjørtning-Hansen
Chairman of the ITI Scholarship Committee

By the end of 2005, the ITI had awarded a total of 85 Scholarships to young clinicians from all over the world enabling them to spend a year at one of the ITI's 14 Scholarship Centers in Europe, the United States and Japan under the guidance of an experienced ITI Fellow. In 2005, a record number of applications were received – 52 – and also awarded – 18.

ITI Scholarship Committee Members

Chairman

Hjørtning-Hansen Erik, Denmark

Hämmerle Christoph, Switzerland

Lang Niklaus P, Switzerland

Weber Hans Peter, USA

Jaberg Thomas, Switzerland

The Scholarship Committee was founded in 1997 and has met regularly since then to discuss and fine-tune the selection procedure for Scholars and Scholarship Centers. Since 1998, the ITI has received more than 220 applications and great pains are taken to match Scholars and Centers optimally. The qualification requirements for both Scholars and Centers are posted on the ITI's website and Centers also supply detailed descriptions of the conditions and program they provide. 2005 saw the addition of the ITI's 14th Scholarship Center in Rome, Italy at the Eastman Dental Hospital under the Chairmanship of Luca Cordaro.

Goals for 2005

The aim of the Scholarship Committee is to ensure that the best possible candidates are selected for the limited number of Scholarships available and that they receive the best possible training available. The five members of the Committee met once in 2005, where, among others, they organized Scholarship activities for the 2005 ITI World Symposium. One of the subjects under discussion was to find ways of improving contact between past and current Scholars. A Scholarship lunch at the World Symposium allowed past and current Scholars to meet and take mutual advantage of each other's experience as well as exchange contact details. Almost half of the 85 past and present Scholars managed to make their way to Munich to take part in the World Symposium and the Scholars lunch.

Each Scholar is awarded a stipend of USD 30,000 that provides the necessary financial freedom to be able to focus exclusively on broadening his or her knowledge of implant dentistry, learning from acknowledged experts in the field. In return, Scholars follow a program that is defined by each Center. They are required to submit two reports throughout the year – after 6 months and at the end of their stay. These reports provide the Committee with important feedback on the Scholar's experience and the kind of program available to the Scholar. Each Center that takes a Scholar receives an award of USD 10,000.

Year	Applications received	Scholarships awarded	Total funding (USD)
1998	3	3	90,000
1999	25	5	150,000
2000	23	5	200,000
2001	32	12	480,000
2002	23	13	520,000
2003	45	16	640,000
2004	26	13	520,000
2005	52	18	720,000

New Research Scholarship program

Among the matters under discussion in 2005 was the establishment of a Research Scholarship program to meet the needs of more academically rather than clinically oriented candidates. A set of basic requirements were worked out and then put to the Board for approval. This led to a decision to divide the Scholarship program into two branches: clinical and research. The focus of the Scholarship program, however, remains on clinical experience and only a small number of Research Scholarships are to be allocated each year.

Training clinicians for the future

The Scholarship program is of immense value to the ITI as a way of reaching young motivated clinicians and training them in line with the ITI's principles and philosophy. These Scholars represent future teachers and leaders in implant dentistry who will practice according to sound principles and procedures based on scientific evidence.

Through its Scholarship program, the ITI has made a strong commitment to the future of implant dentistry that complements its other activities in continuous education. By providing Scholars with a teaching environment in which only tried and tested treatment methods are applied, the ITI is contributing to the spread of high standards of quality in the practice of implant dentistry.

The ITI Scholarship program is unique in its field, supporting up to 20 Scholars each year both with a strong financial commitment as well as dedicated mentoring support as an investment in global continuing education for implant dentistry and related tissue regeneration.

Scholarship Centers:			
<i>Scholarship Center</i>	<i>Location</i>	<i>Scholarship Center</i>	<i>Location</i>
Friedrich-Wilhelms-University	Bonn, Germany	The University of Texas, Health	San Antonio TX, USA
Katharinen-Hospital	Stuttgart, Germany	Science Center, Dental School	
Johannes-Gutenberg-University	Mainz, Germany	University of Florida, College of	Gainesville FL, USA
Eastman Dental Hospital	Rome, Italy	Dentistry	
Tsurumi University Dental School	Yokohama, Japan	University of Connecticut,	Farmington CT, USA
University of Geneva	Geneva, Switzerland	School of Dental Medicine	
University of Berne	Berne, Switzerland	Harvard School of Dental Medicine	Boston MA, USA
University of Zurich	Zurich, Switzerland	University of North Carolina,	Chapel Hill NC, USA
Eastman Dental Institute for	London, UK	School of Dentistry	
Oral Health Care Science			

Celebrating 25 Years of the ITI

Munich, June 17, 2005

The ITI's 25th anniversary was more than just an excuse to celebrate the fact that the organization had developed so extensively since its small and informal beginnings in 1980. It was also an opportunity to thank the many people who had invested a great deal of time and effort in order to keep the organization running and growing over the years.

The way the ITI chose to thank its Fellows was by recreating the fun of the fairground with a carousel and chair-o-plane from the 19th century as well as all the traditional side shows including a coconut shy in uniquely Bavarian style and various opportunities to test the strength of the (mostly) male arm.

Accompanied by traditional Bavarian culinary specialties that involved large amounts of meat and soured herrings, the Fellows and their partners enjoyed an evening of music and relaxation.





Financial Report

ITI Association

In 2005, the ITI Association had revenues of more than 200,000 Swiss Francs (CHF) from Fellowship and Membership fees. Revenues from Fellowship fees were slightly lower than the previous year due to a reclassification of fee payments in 2005. Strong growth in the Members category led to an almost eight-fold increase in income from fees. As well as administration and running costs, contributions to the 2005 Annual General Meeting and the 25th ITI jubilee celebration accounted for the remaining expenditure.

ITI Association Financial Statement 2005

	2005	in CHF 2004
Revenues		
Annual Fellowship Fee	51,750	54,750
Annual Membership Fee	150,529	19,875
Total Revenues	202,279	74,625
Costs		
Total Costs	173,505	113,160
Operating Profit	28,774	-38,535

ITI Foundation

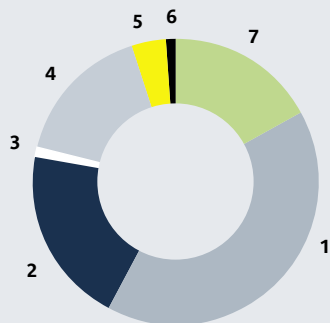
In 2005, the ITI Foundation spent close to 9.5 million Swiss Francs (CHF) supporting the various ITI Committees, activities and projects in line with its brief to constantly improve treatment methods and outcome as well as to promote the ITI.

A large increase in expenditure occurred in the field of education, where a larger number of Scholarships were awarded in 2005. Due to the higher number of research applications of a first-rate standard of quality, the funds allocated for research projects increased considerably. Apart from project grants, the total amount of research funding in 2005 also included an annual contribution for the ITI Research Institute in Berne, Switzerland. General Administration costs remained stable for the most part except for a considerable increase in outlay for ongoing and new projects such as the World Symposium 2005, the ITI Treatment Guide and Forum Implantologicum as well as considerably extended Speaker support activities.

ITI Association Financial Statement 2005

Account	2005	in CHF 2004
Operating Revenues		
Total Operating Revenues	7,770,000	7,245,960
Operating Costs		
Research	-3,757,477	-2,600,698
Development	0	-81,894
Education		
<i>Scholarships</i>	-1,476,491	-832,495
<i>Sections</i>	-419,118	-512,972
<i>Rest of the World</i>	-8,580	-919
Total Education	-1,904,189	-1,346,386
Biologics Oversight Group	-118,958	0
General Administration		
<i>ITI Center</i>	-1,466,424	-1,572,907
<i>Committees</i>	-395,206	-381,025
<i>Board of Directors</i>	-126,373	-204,182
<i>Projects</i>	-1,551,513	-352,616
Total General Administration	-3,539,516	-2,510,730
Total Operating Revenues	7,770,000	7,245,960
Total Operating Costs	-9,320,140	-6,539,708
Operating Profit	-1,550,140	706,252

Overview of ITI Foundation Expenses in 2005



1	Research	41%
2	Education	20%
3	Biologics	1%
4	ITI Center	16%
5	Committees	4%
6	Board of Directors	1%
7	Projects	17%



To the Board of Trustees of
ITI Foundation for the Promotion of Oral Implantology, Basel

Basel, April 3, 2006

Report of the Statutory Auditors

As statutory auditors, we have audited the accounting records and the financial statements (balance sheet and statement of operations) of ITI Foundation for the Promotion of oral Implantology for the year ended December 31, 2005.

These financial statements are the responsibility of the board of trustees. Our responsibility is to express an opinion on these financial statements based on our audit. We confirm that we meet the legal requirements concerning professional qualification and independence.

Our audit was conducted in accordance with auditing standards promulgated by the Swiss profession, which require that an audit be planned and performed to obtain reasonable assurance about whether the financial statements are free from material misstatement. We have examined on a test basis evidence supporting the amounts and disclosures in the financial statements. We have also assessed the accounting principles used, significant estimates made and the overall financial statement presentation. We believe that our audit provides a reasonable basis for our opinion.

In our opinion, the accounting records and financial statements comply with Swiss law and the foundation's articles of incorporation.

Ernst & Young Ltd

A handwritten signature in black ink, appearing to read "Aeby", written over a light blue horizontal line.

Manuel Aeby
Swiss Certified Accountant
(in charge of the audit)

A handwritten signature in black ink, appearing to read "Blaser", written over a light blue horizontal line.

Markus B. Blaser
Swiss Certified Accountant



To the General Meeting of the Members of
ITI Association, Basel

Basel, April 26, 2006

Report of the Auditors

As auditors, we have audited the accounting records and the financial statements (balance sheet and income statement) of ITI for the year ended December 31, 2005.

These financial statements are the responsibility of the board of the association. Our responsibility is to express an opinion on these matters based on our audit. We confirm that we meet the requirements concerning professional qualification and independence.

Our audit was conducted in accordance with auditing standards promulgated by the Swiss profession, which require that an audit be planned and performed to obtain reasonable assurance about whether the financial statements are free from material misstatement. We have examined on a test basis evidence supporting the amounts and disclosures in the financial statements. We have also assessed the accounting principles used, significant estimates made and the overall financial statement presentation. We believe that our audit provides a reasonable basis for our opinion.

In our opinion, the accounting records and the financial statements comply with Swiss law and the articles of the association.

We recommend that the financial statements submitted to you be approved.

Ernst & Young Ltd

A handwritten signature in black ink, appearing to read 'Aeby'.

Manuel Aeby
Swiss Certified Accountant
(in charge of the audit)

A handwritten signature in black ink, appearing to read 'Blaser'.

Markus B. Blaser
Swiss Certified Accountant

Contact

ITI International Team for Implantology

ITI Center
Peter Merian-Weg 10
CH-4052 Basel
Switzerland
Tel.
+41 (0)61 270 83 83
+41 (0)61 270 83 84

Are you interested in applying for membership, a research grant or scholarship, or finding out about ongoing events and who's who in the ITI?

Go to www.iti.org for more information.

For further information, please contact:
iticenter@iticenter.ch

Imprint

Published by:

ITI International Team for Implantology,
ITI Center, Basel

Graphic Design:

Wirz Corporate AG, Zurich



Our mission is...

“...to promote and disseminate knowledge on all aspects of implant dentistry and related tissue regeneration through research, development and education to the benefit of the patient.”

The ITI Mission Statement